

FISCAL YEAR	JOB NO.	SHEET NO.	TOTAL SHEETS
1930	3125	1	14
FED. DIST. NO.	STATE	FED. AID PROJ. NO.	FISCAL YEAR
6	ARK.	200-B	1930
SHEET NO.	TOTAL SHEETS		
1	14		

STATE OF ARKANSAS
STATE HIGHWAY COMMISSION

PLAN OF PROPOSED BRIDGES
OVER
LITTLE MISSOURI RIVER RELIEF
NEVADA & CLARK COUNTIES

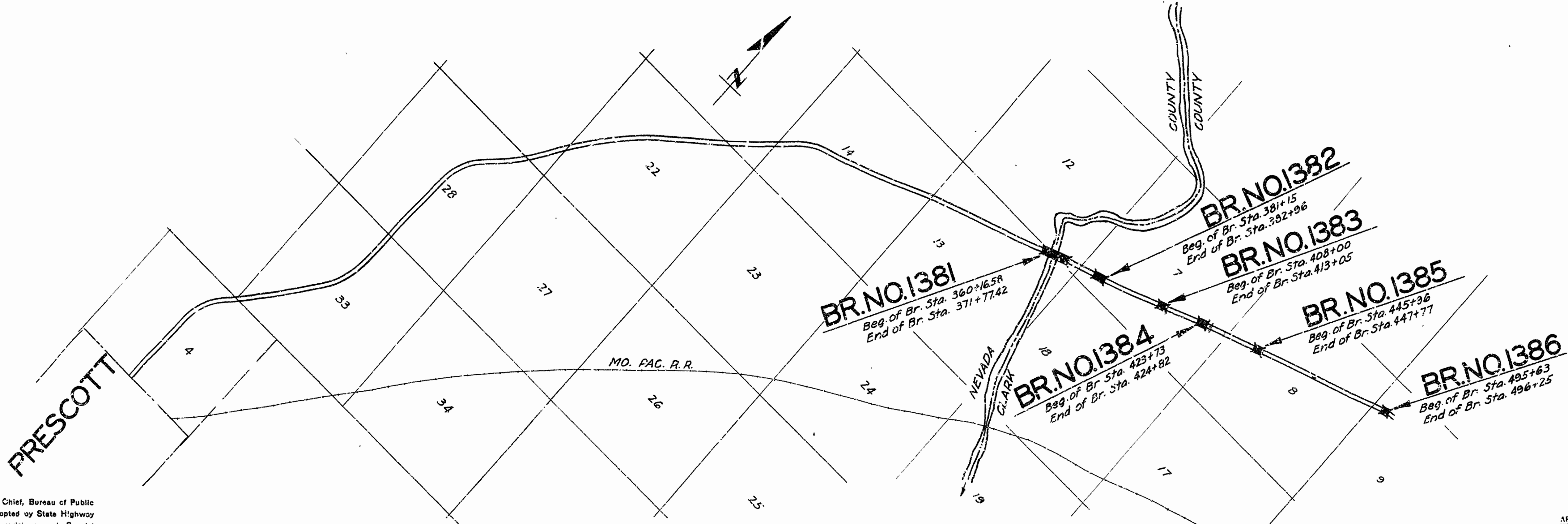
QUANTITIES

Item No. 13 Dry Excavation for Structures	605	Cu. Yds.
" " 13 Wet " " "	636	" "
" " 13 Rock " " "	39	" "
" " 17 Borrow " " "	500	" "
" " 54 Class "A" Concrete	534.15	" "
" " 54 " "S" " " "	2615.81	" "
" " 55 Reinforcing Steel	771,436	Lbs.
" " 56 Structural Steel (Trusses)	310,077	" "
" SP 66 Untreated Timber Piling	1,408	Lin. Ft.
" SP 68 Precast Concrete Piling	8,610	" "
" SP 69 Rip Rap (1 Ft. thick)	617	Cu. Yds.
" " 74 Concrete Railing for Structures	3,182	Lin. Ft.
Non Participation in Federal Aid		

INDEX OF SHEETS

Sheet No. 1	Drwg. No. 2599	Title Sheet.
" " 2	" " 2600	General Layout of Bridge No. 1381.
" " 3	" " 2601	Layout of Truss Spans of Br. No. 1381.
" " 4	" " 2602	Details of Diers of Br. No. 1381.
" " 5	" " 2447	" " Standard 90' Low Truss.
" " 6	" " 2450	" " " " 110'
" " 7	" " 2329	" " Std 36' R.C.D. Gir. Span, 24' Rdwy, Pile Bents.
" " 8	" " 2603	Layout of Br. No. 1382.
" " 9	" " 2604	" " " " 1383.
" " 10	" " 2605	" " " " 1384.
" " 11	" " 2606	" " " " 1385.
" " 12	" " 2607	" " " " 1386.
" " 13	" " 2608	Details of Abutments of Br. No. 1386.
" " 14	" " 2355	" " Std 35' R.C.D. Girder Span, 27' Rdwy.

ROUTE 67 SEC. 3 & 4
JOB NO 3125
FEDERAL AID PROJECT NO. 200-B



Specifications approved by Chief, Bureau of Public Roads, September 28, 1925, and adopted by State Highway Commission May 30, 1926 with revisions and Special Provisions as follows:

REVISIONS			
Pamphlet A	Revised	Sept. 1st, 1928	Approved June 1st, 1929
" B	Revised	Nov. 1st, 1929	
" C			
" D	Revised	July 1st, 1928	Approved Nov. 24th, 1928
" E	Revised	Jan. 1st, 1930	
" F	Revised	Aug. 1st, 1926	
" G	Revised	June 1st, 1929	
" H	Revised	Jan. 1st, 1930	
" I	"	March 1st, 1930	
" J	Revised	Jan. 1st, 1928	Approved June 1st, 1929
" K			
" L	Revised	Jan. 1st, 1929	Approved June 1st, 1929

SPECIAL PROVISIONS		
Item		No. of Sheets
Precast Conc. Piling		3
Borrow		2
Untreated Tim. Piling		12
Rip Rap		1
Engineers Field Office		1
Pamphlet I		51

LAYOUT
Scale: 1"=2000'

LENGTH OF PROJECT	= 2171'-10" = 0.411 MI.
LENGTH OF BRIDGES	= 2171'-10"
LENGTH OF EMBANKMENT	= 50'
LENGTH OF JOB	= 2221'-10"

M.B. Moore
BRIDGE ENGINEER

BRIDGES NO. 1381-1382-1383-1384-1385 & 1386 DRAWING NO. 2599

APPROVED [Signature]

CHIEF ENGINEER - U. S. BUREAU OF PUBLIC ROADS

APPROVED [Signature]

DISTRICT ENGINEER - U. S. BUREAU OF PUBLIC ROADS

APPROVED [Signature]

CHIEF - S. BUREAU OF PUBLIC ROADS

APPROVED [Signature]

CHAIRMAN - STATE HIGHWAY ENGINEERS

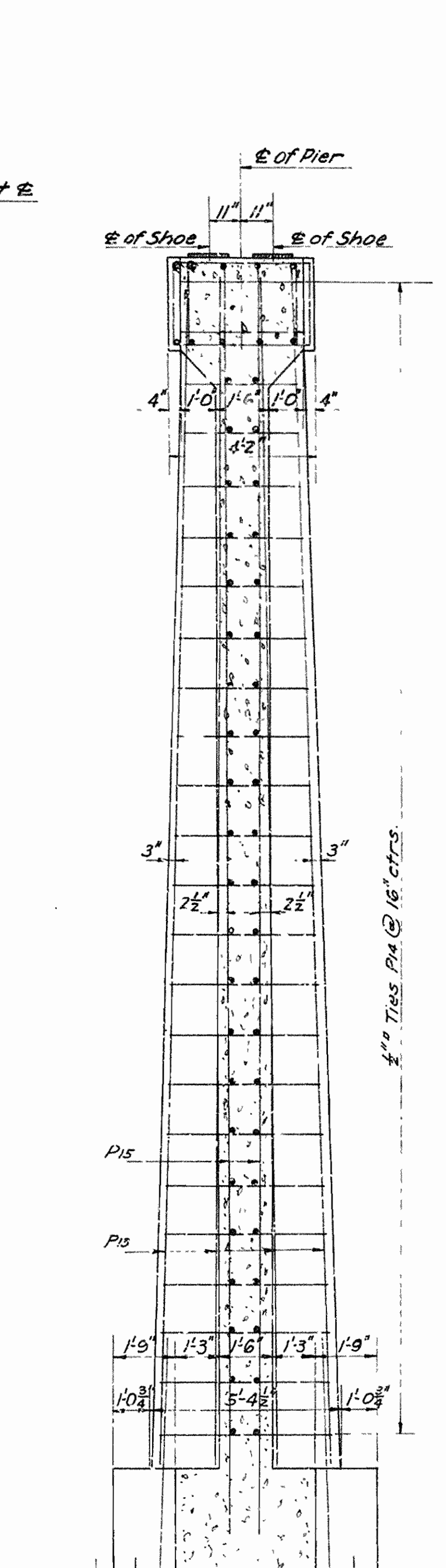
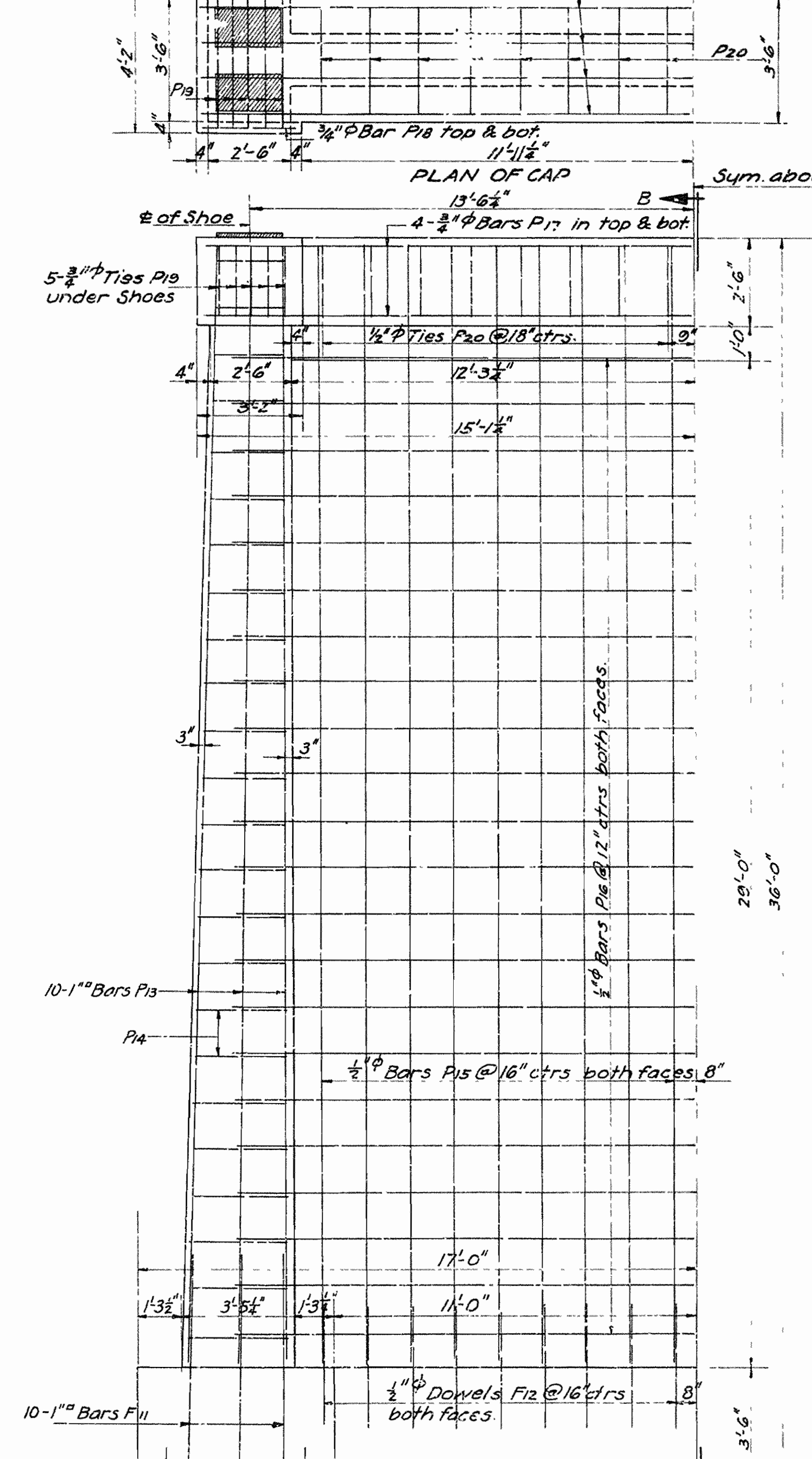
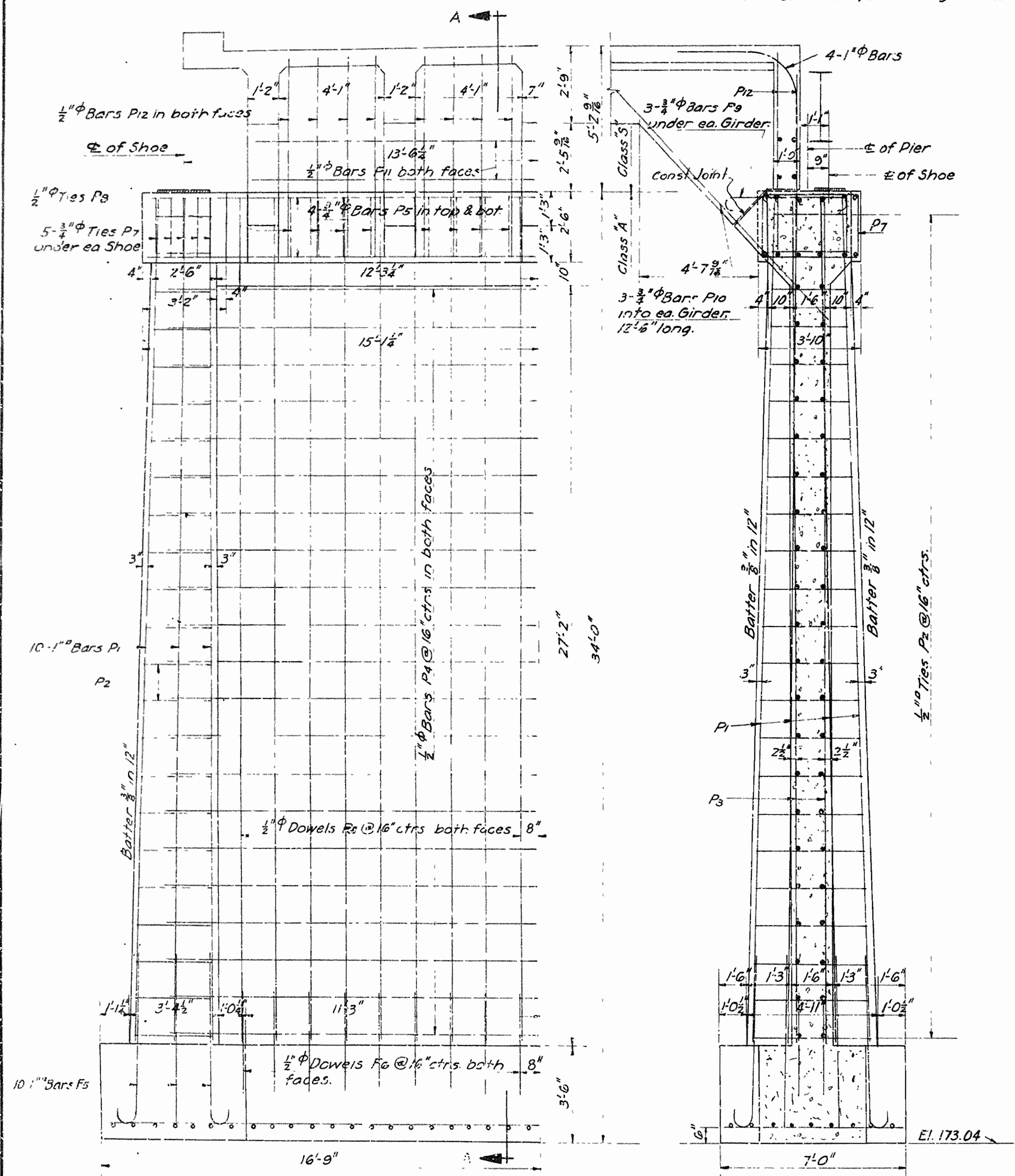
STATE HIGHWAY ENGINEER

For Details of 36' R.C.D. Girder Span, See Drwg. No. 2329
" " " 90' Low Truss, See Drwg. No. 2447

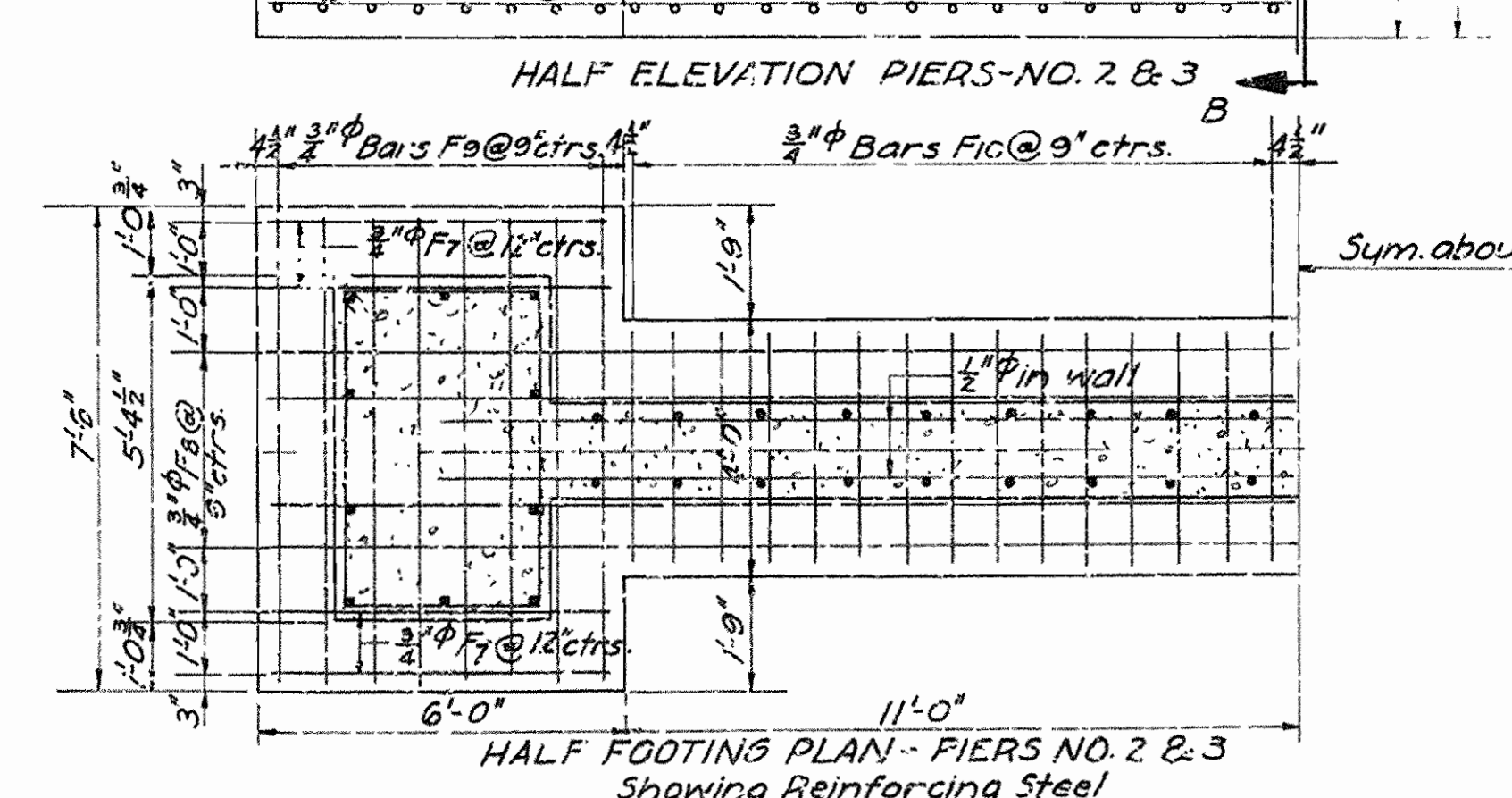
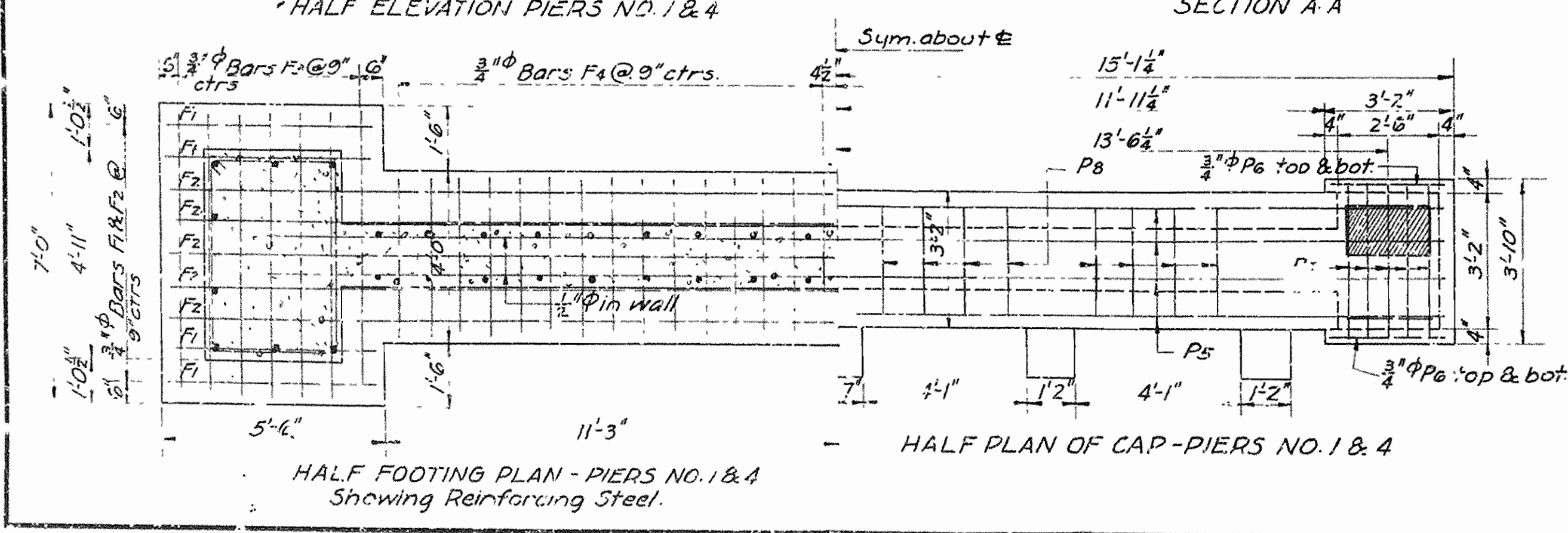
For Details of 110' Low Truss
See Drwg. No. 2450

FISCAL YEAR	Job No	SHEET NO	TOTAL SHEETS
1930	3125	2	14

200-B 1930 14

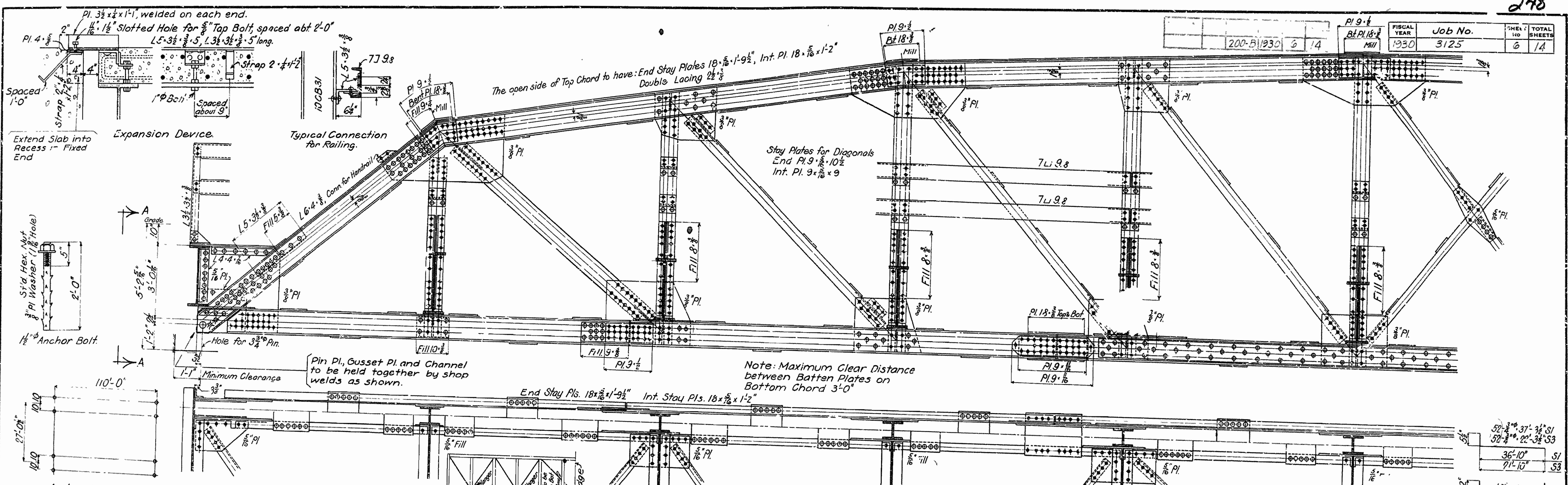


Mark	Size	Length	Bending Diagram
F5 & F11	1" φ	7'-3"	
P2	1/2" φ	Ave. 13'-5"	Varies by 1" from 2'-8" to 4'-6" (A) / Varies by 1/2" from 2'-1" to 3'-0" (B)
P7	3/4" φ	12'-5"	3'-6" x 2'-1/2"
P8	1/2" φ	10'-8"	2'-10" x 2'-1/2"
P14	1/2" φ	Ave. 13'-10"	Varies by 1" from 3'-0" to 4'-11" (A) / Varies by 1/2" from 2'-1" to 3'-0" (B)
P19	3/4" φ	12'-8"	3'-10" x 2'-1/2"
P20	1/2" φ	11'-4"	3'-2" x 2'-1/2"
P9	3/4" φ	6'-0"	



DETAILS OF PIERS
BRIDGE OVER LITTLE MISSOURI RIVER
PRESCOTT-LITTLE MO. RIVER ROAD
CLARK COUNTY
 ROUTE 67 SEC. 4
ARKANSAS STATE HIGHWAY COMMISSION
 LITTLE ROCK, ARK.
 Drawn By: *HB* Date: 5-21-30
 Traced By: *BA* Date: 5-24-30
 Check. By: _____ Date: _____
 Scale: 3/8" = 1 ft.
BRIDGE No. 1381 **DRAWING No. 2602**

N.B. Burns
BRIDGE ENGINEER



Notes

Rivets $\frac{3}{4}$ " Open holes $\frac{1}{8}$ "

All holes in truss connections to be sub-punched $\frac{3}{16}$ " and reamed to size while truss is assembled; this applies to field as well as shop rivets.

Floor beam connections to be sub-punched $\frac{3}{16}$ " and reamed to a metal template.

All field connections shall be riveted.

Shop paint: After being completely assembled and shop work finished, all pieces shall be given one coat of red lead and raw linseed oil before shipment.

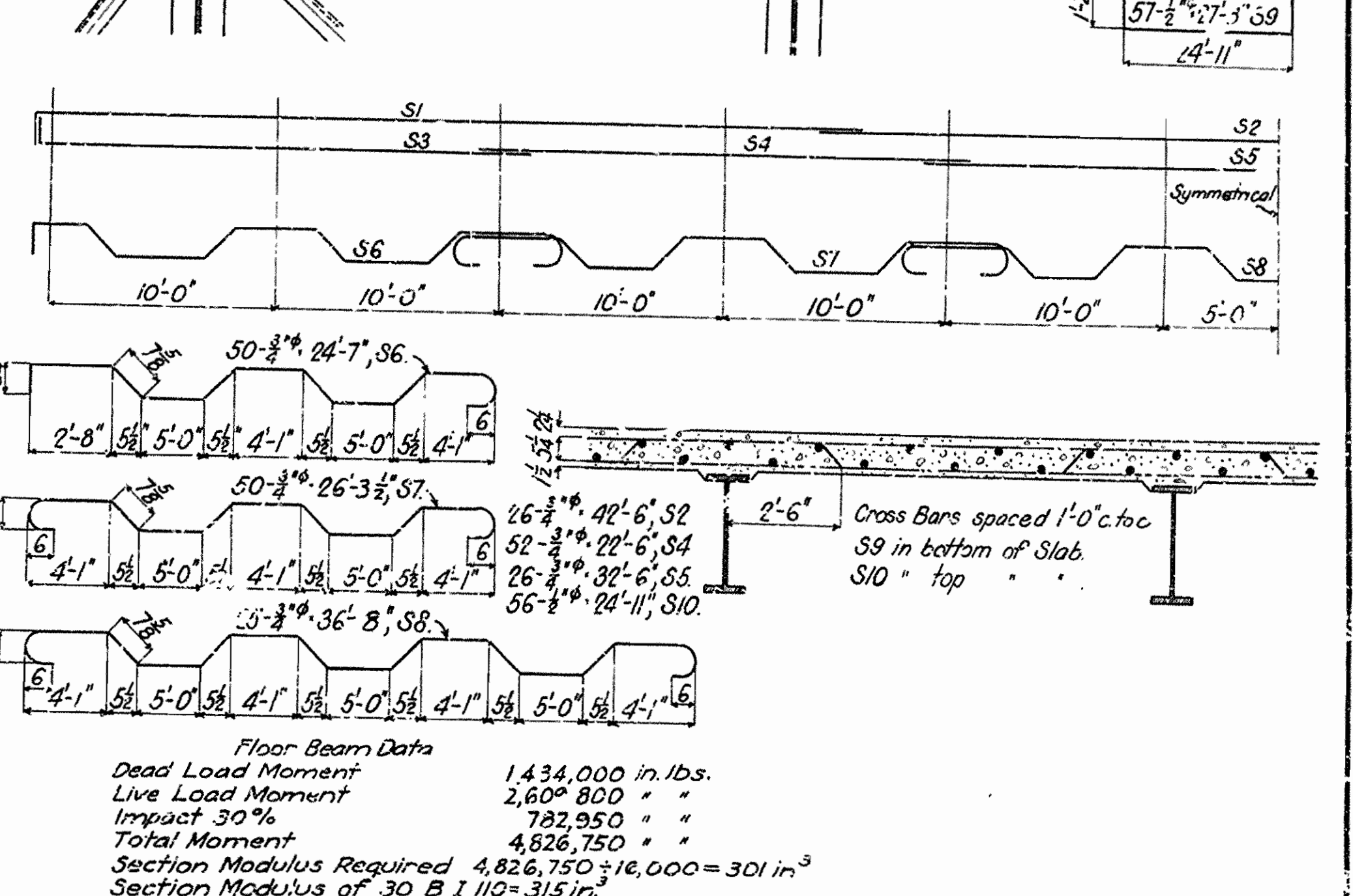
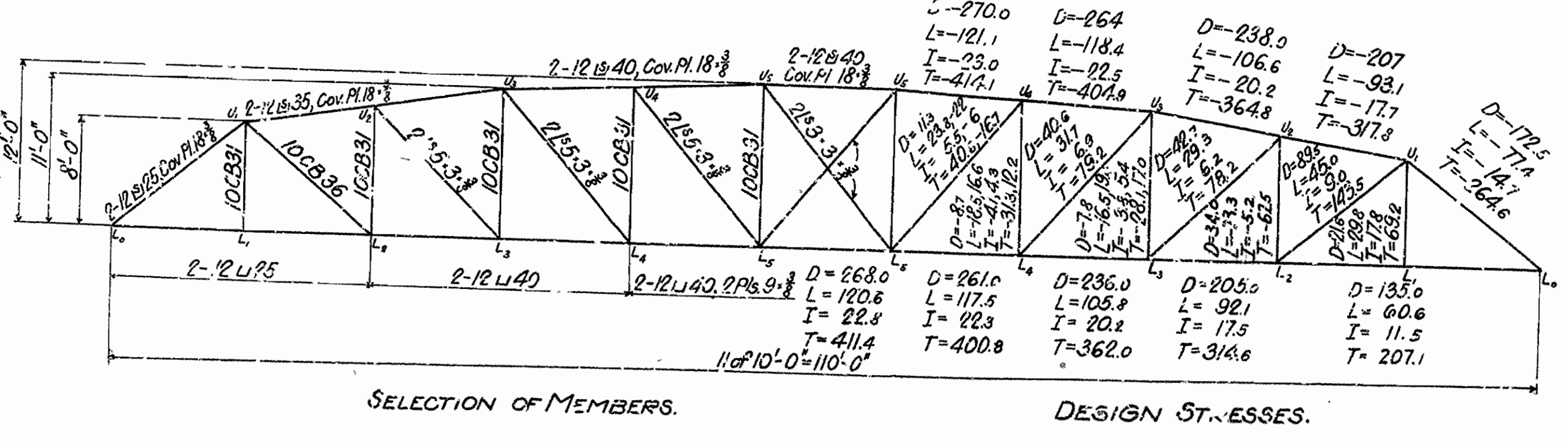
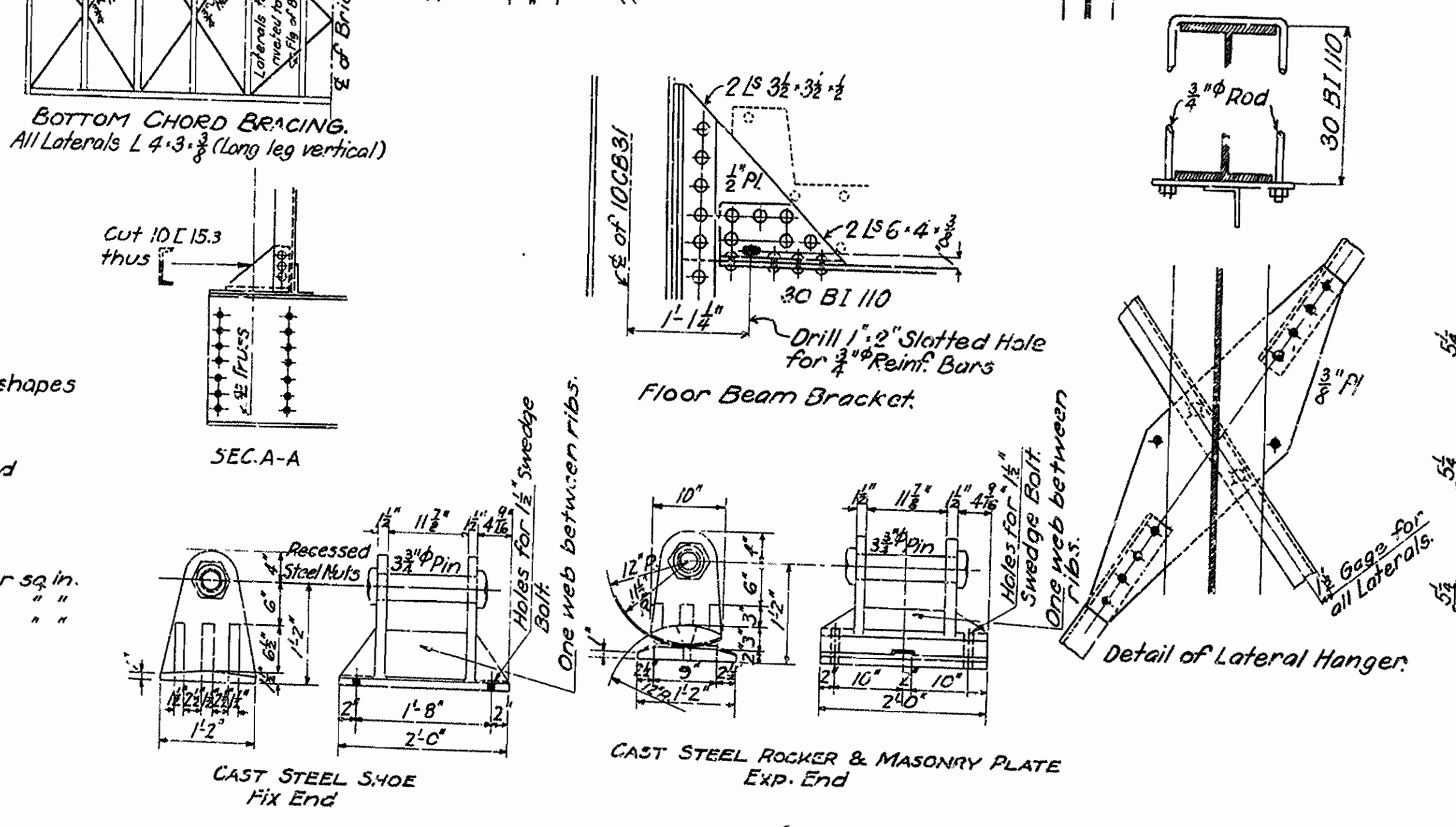
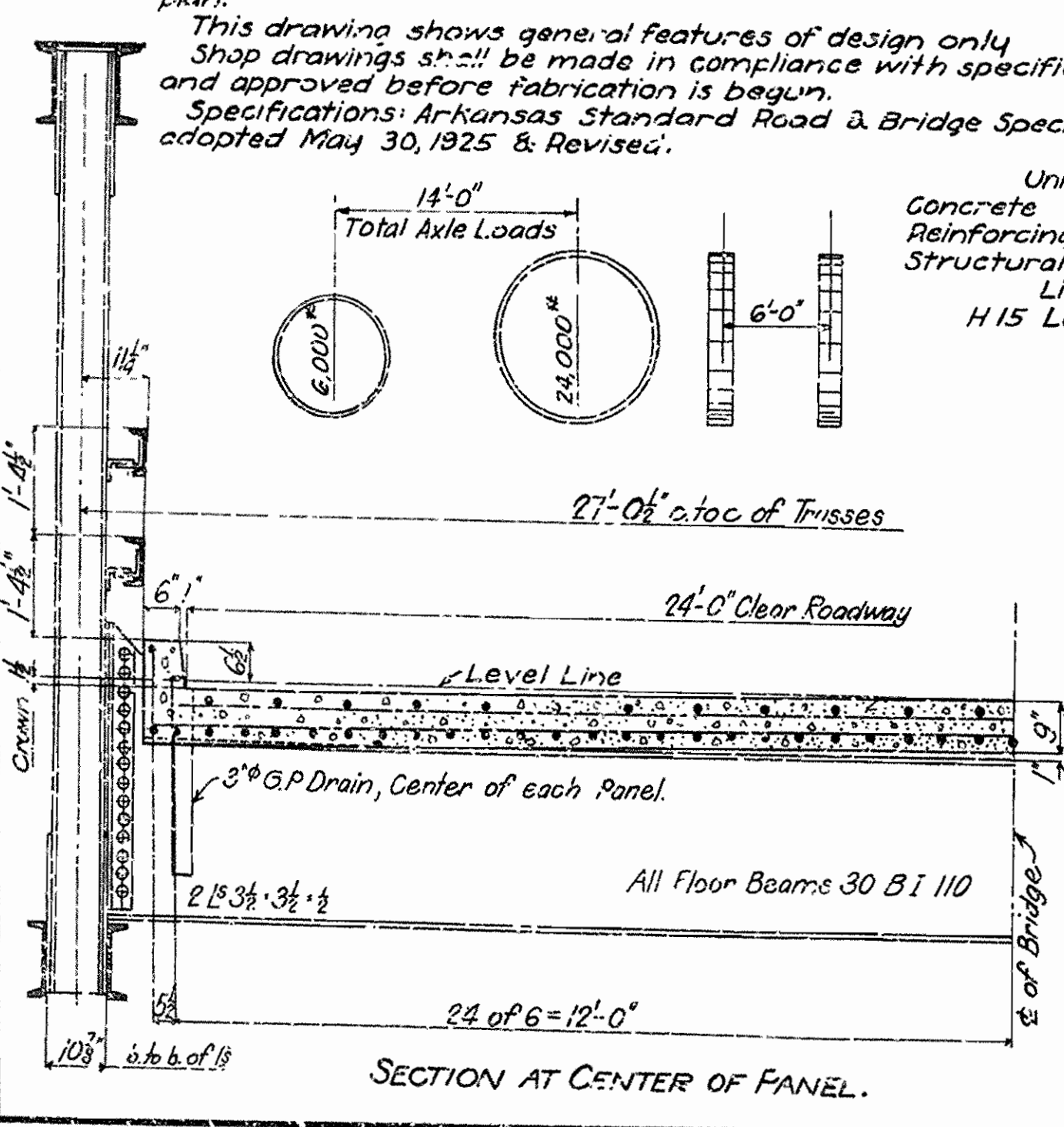
Field paint: Apply two coats of different colors as specified by the engineer.

Floor slab: Concrete to be Class "S" One inch has been added for wear. All floor beams to be milled to exact length after framing angles have been riveted.

Shapes of equal or greater strength may be substituted for structural shapes shown, but payment will be made in accordance with sizes given on this plan.

This drawing shows general features of design only. Shop drawings shall be made in compliance with specifications, submitted and approved before fabrication is begun.

Specifications: Arkansas Standard Road & Bridge Specifications, adopted May 30, 1925 & Revised.



ARKANSAS STATE HIGHWAY COMMISSION
LITTLE ROCK, ARK.

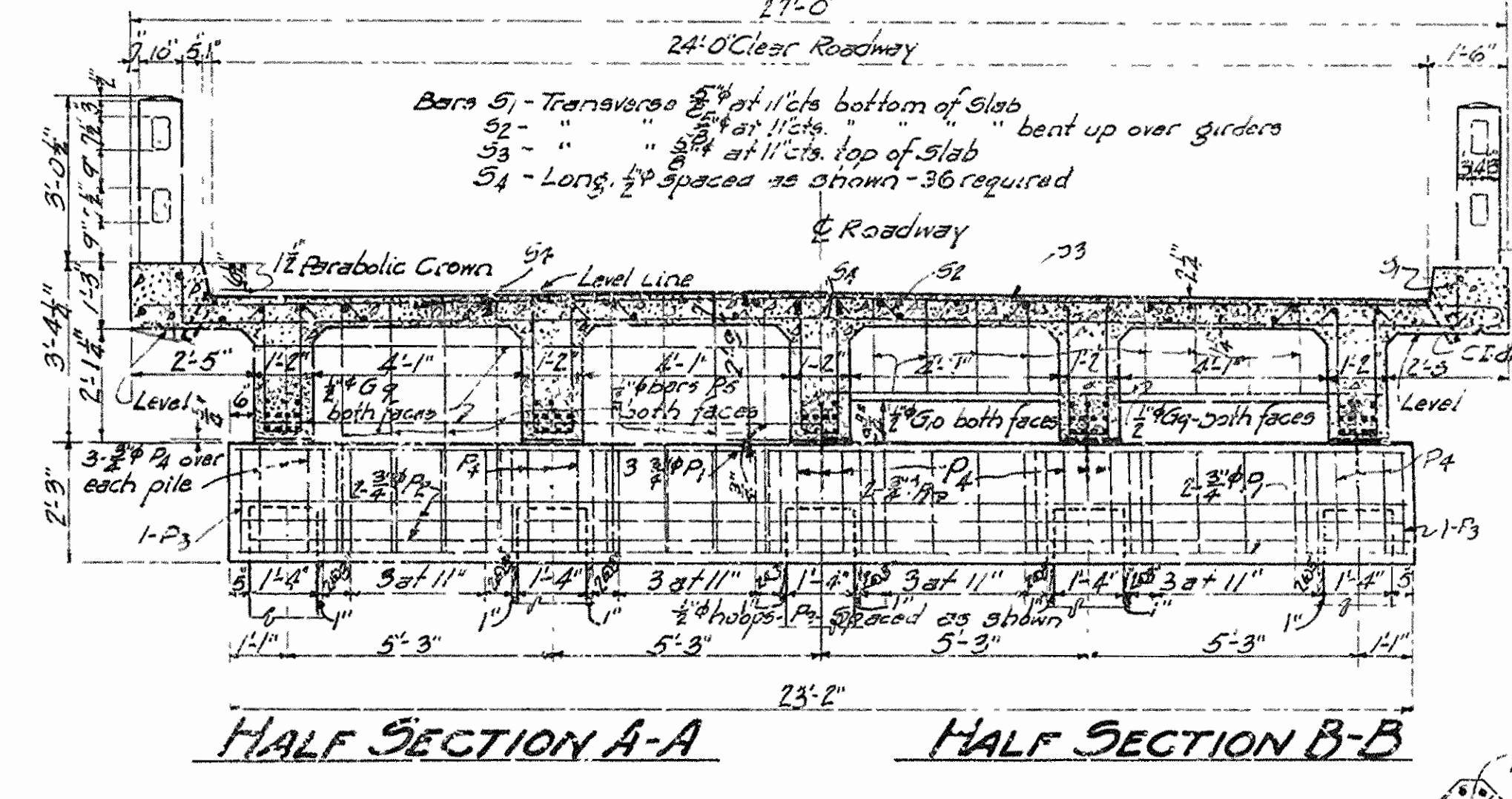
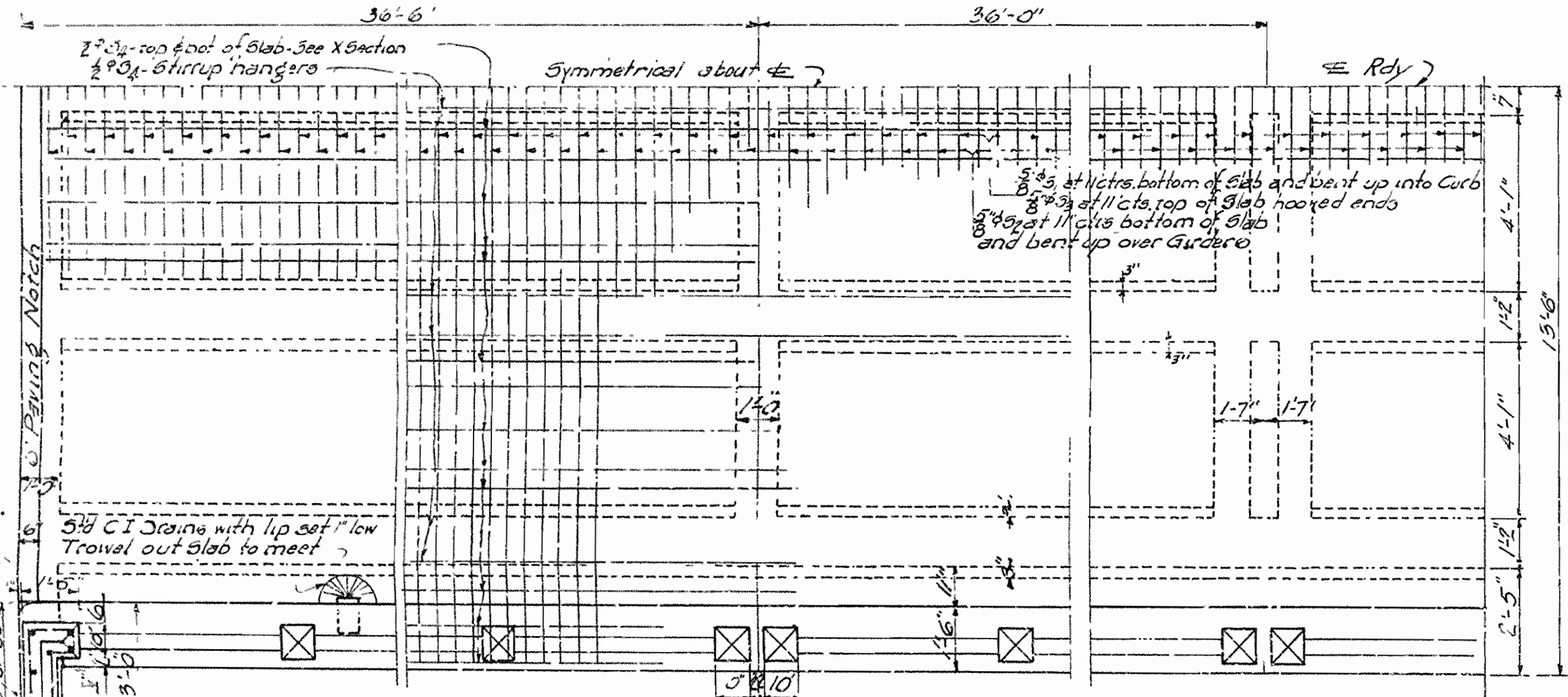
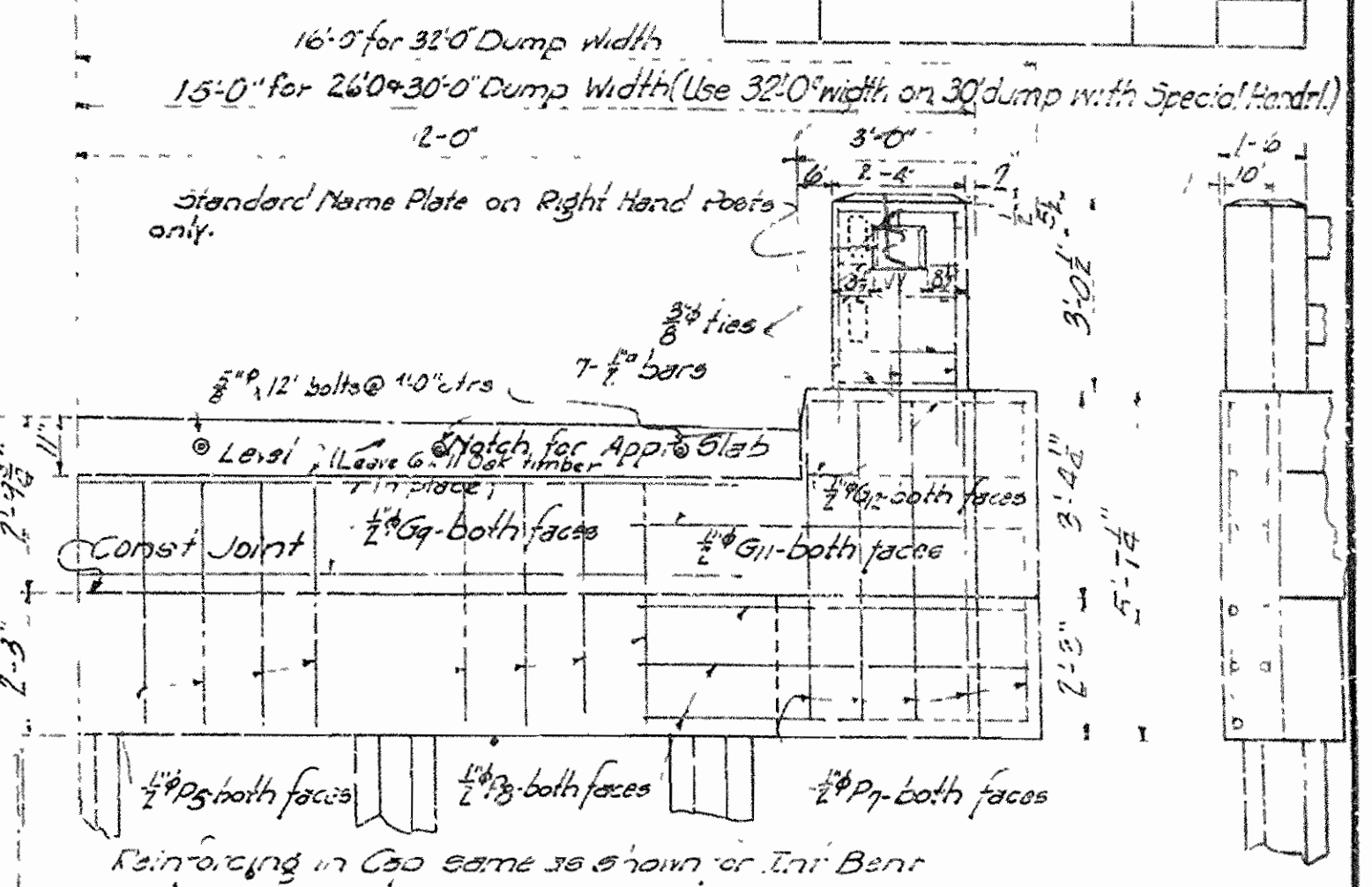
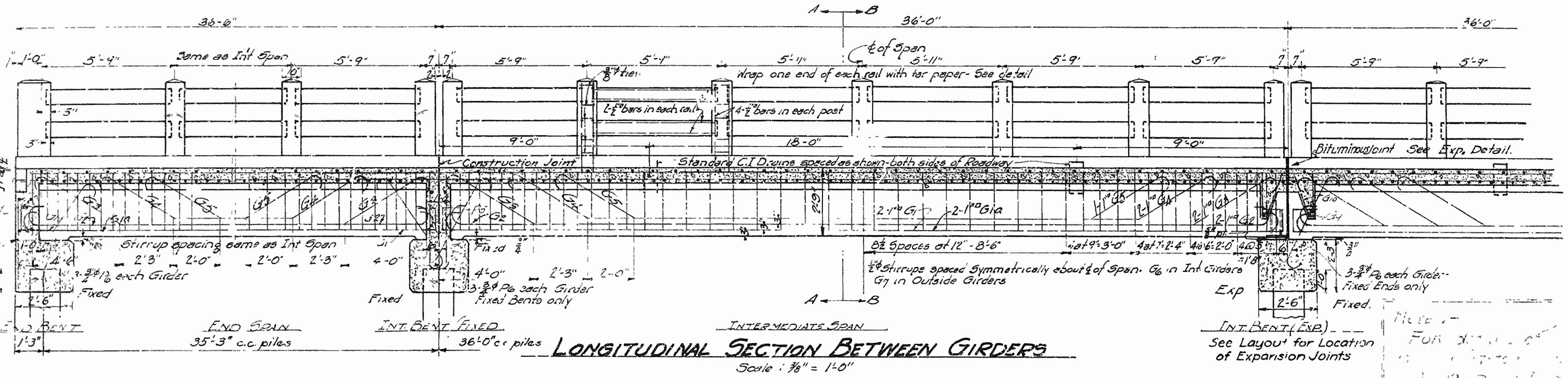
STANDARD PLAN
110'-0" LOW TRUSS SPAN
24'-0" CLEAR ROWY.

ROUTE 56

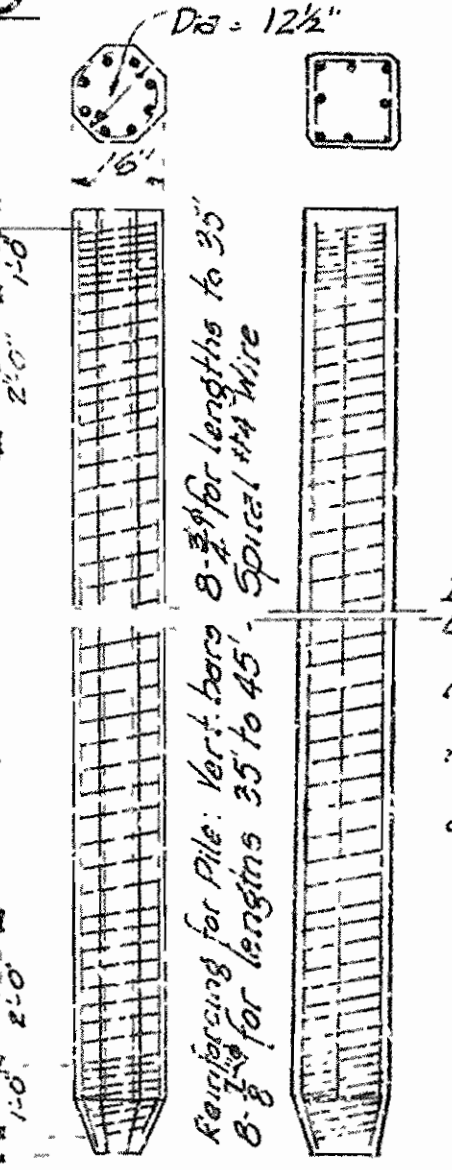
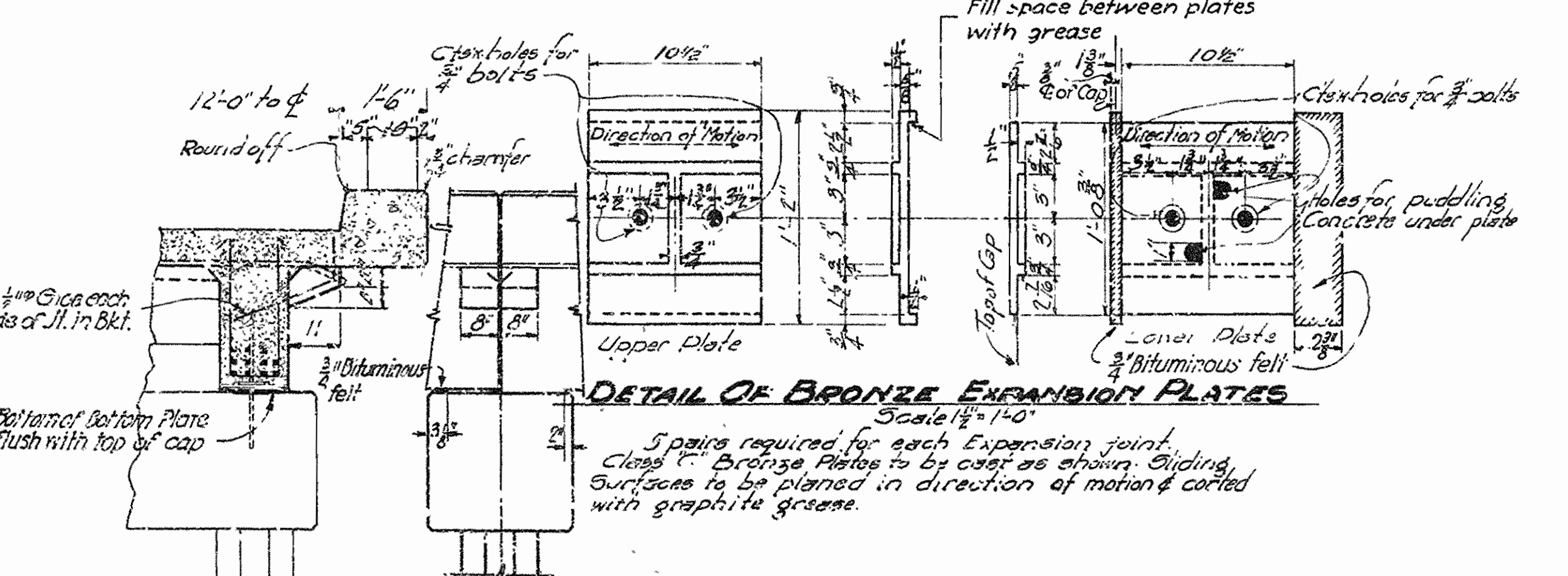
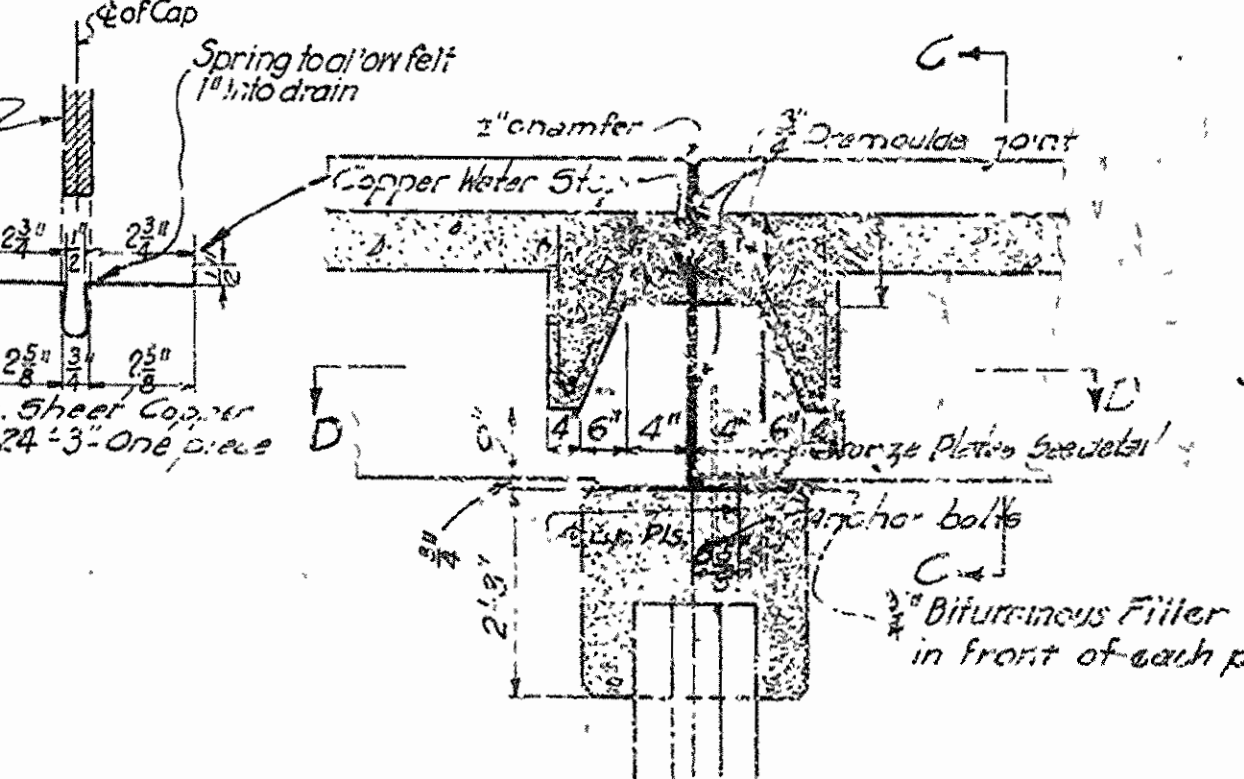
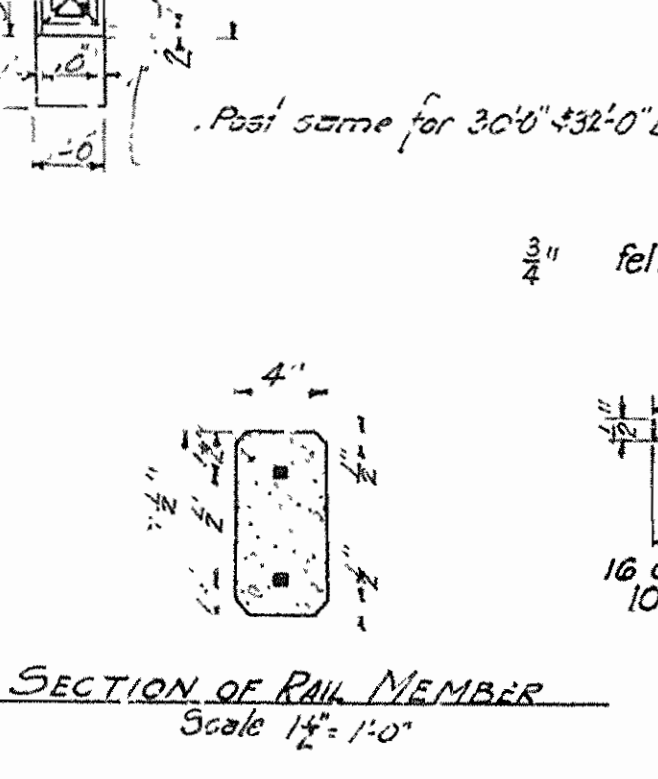
Drawn By: A Date: _____
Traced By: _____ Date: _____
Checked By: _____ Date: _____

Scale: $\frac{1}{2}$ in. = 1 ft.

BRIDGE ENGINEER
BRIDGE NO. _____ DRAWING NO. 2450

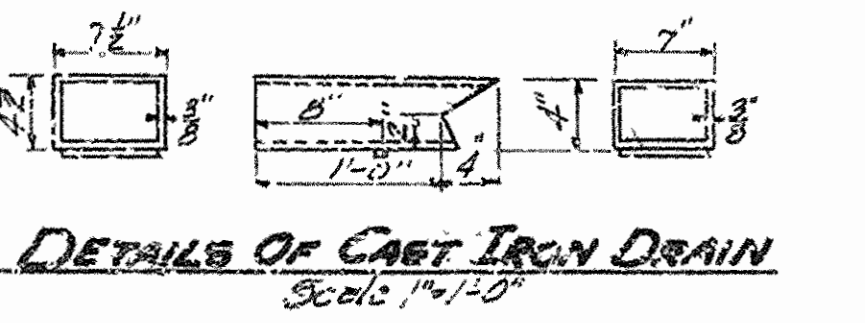
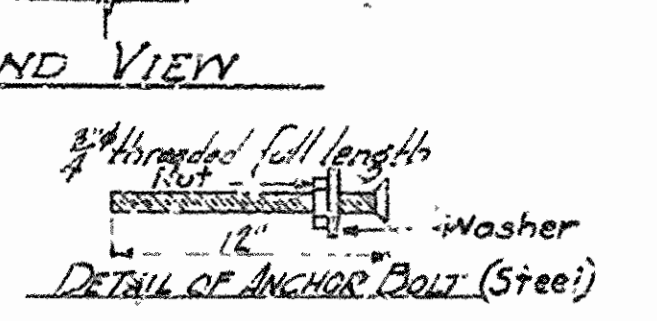
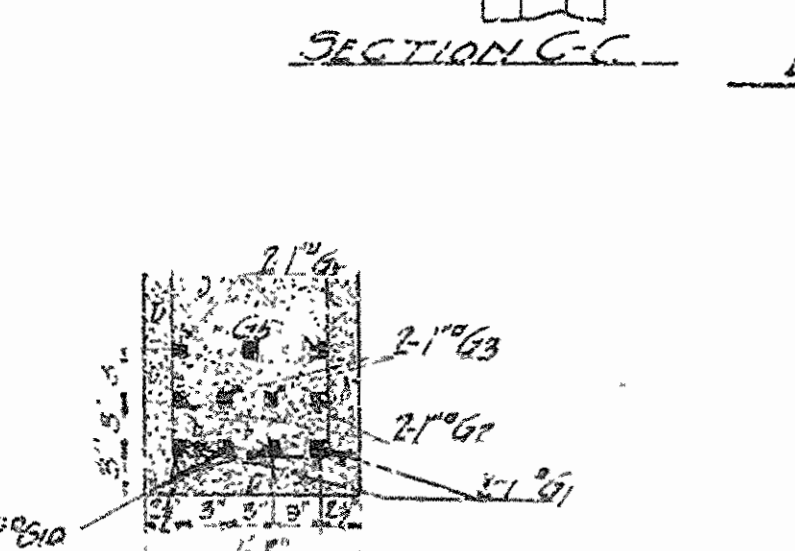
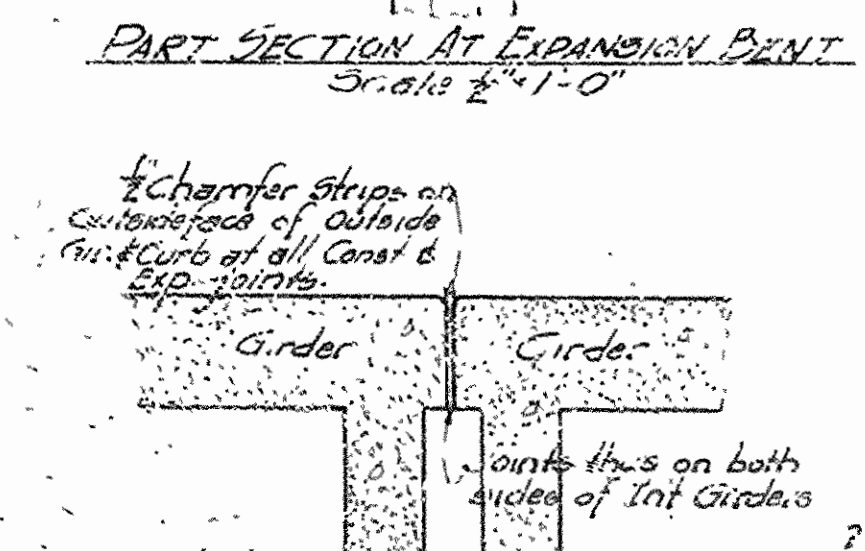
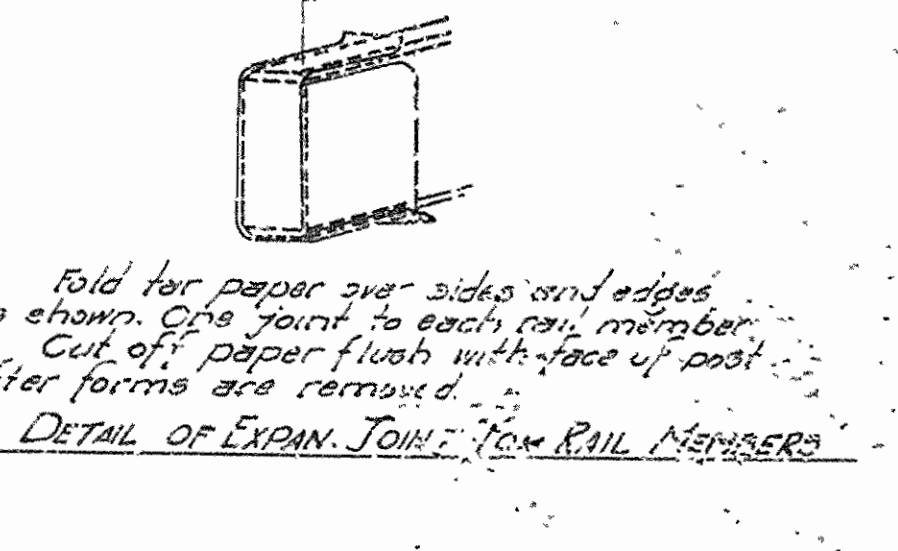


Mk	Size	Length	Bonding Diagram
S1	5/8"	17'-0"	
S2	5/8"	28'-3"	
S3	5/8"	27'-3"	
G1	1"	40'-2"	End Span
G1	1"	35'-8"	Int. Span
G2	1"	36'-8"	
G1a	1"	37'-2"	
G3	1"	38'-3"	
G4	1"	33'-0"	
G5	1"	29'-0"	
G6	1"	0'-5"	
G7	1"	6'-3"	
G10	1"	3'-3"	
G10a	1"	3'-4"	
P1	3/4"	44'-9"	
P2	1/2"	8'-6"	
P3	3/8"	5'-0"	
P4	3/8"	5'-6"	



GENERAL NOTES

All exposed corners to have 1/4" chamfer unless otherwise noted.
 Precast Concrete to be made to S.P. 11.11. Max. 28' 8"
 All Concrete except Handrails to be Class 3.
 Reinforcing Steel to be deformed bars of Structural or Intermediate Grade. Shop List and Bonding Diagram must be submitted by the Contractor before foundation is begun.
 Concrete piling to be Class 3 Concrete and to have a minimum capacity of 30 tons each.
 Roadway Drains and Expansion Devices to be paid for at the Unit Price bid for Reinforcing Steel, unless otherwise provided in Specifications, Arkansas Road and Bridge Specifications adopted May 29, 1925 and revised Unit Stresses 15,000 lbs., 16,700 lbs., 11,150 lbs. loading



REINFORCING FOR PILE: Vert. bars 8# for lengths to 35' 6# for lengths 35 to 45' 4# for wire

5/8" dia. C.I. bars 7'-0" to 30'-0" dia. Caps - 8" dia. 32" dia. 24" dia.

DETAILS OF STANDARD 36'-0" R.C. DECK GIRDER AND PILE BENTS

5 GIRDER TYPE - 5 PILE BENT
 24'-0" CLEAR ROADWAY
 ARKANSAS STATE HIGHWAY COMMISSION
 LITTLE ROCK, ARK.
 Drawn By: E.A.H. Date: 6/16/30
 Traced By: J.W. Date: 7/17/30
 Checked By: Date:
 Scale: as noted
 BRIDGE NO. DRAWING NO. 2329

M.B. Weaver
 BRIDGE ENGINEER